

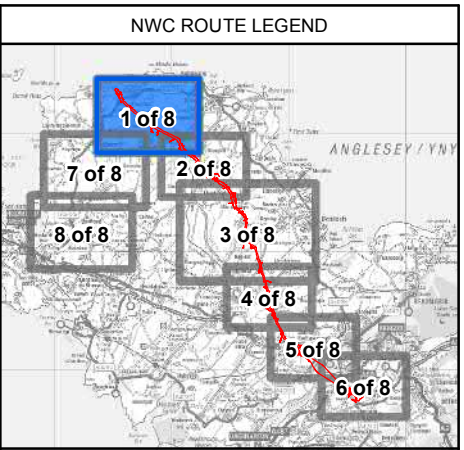
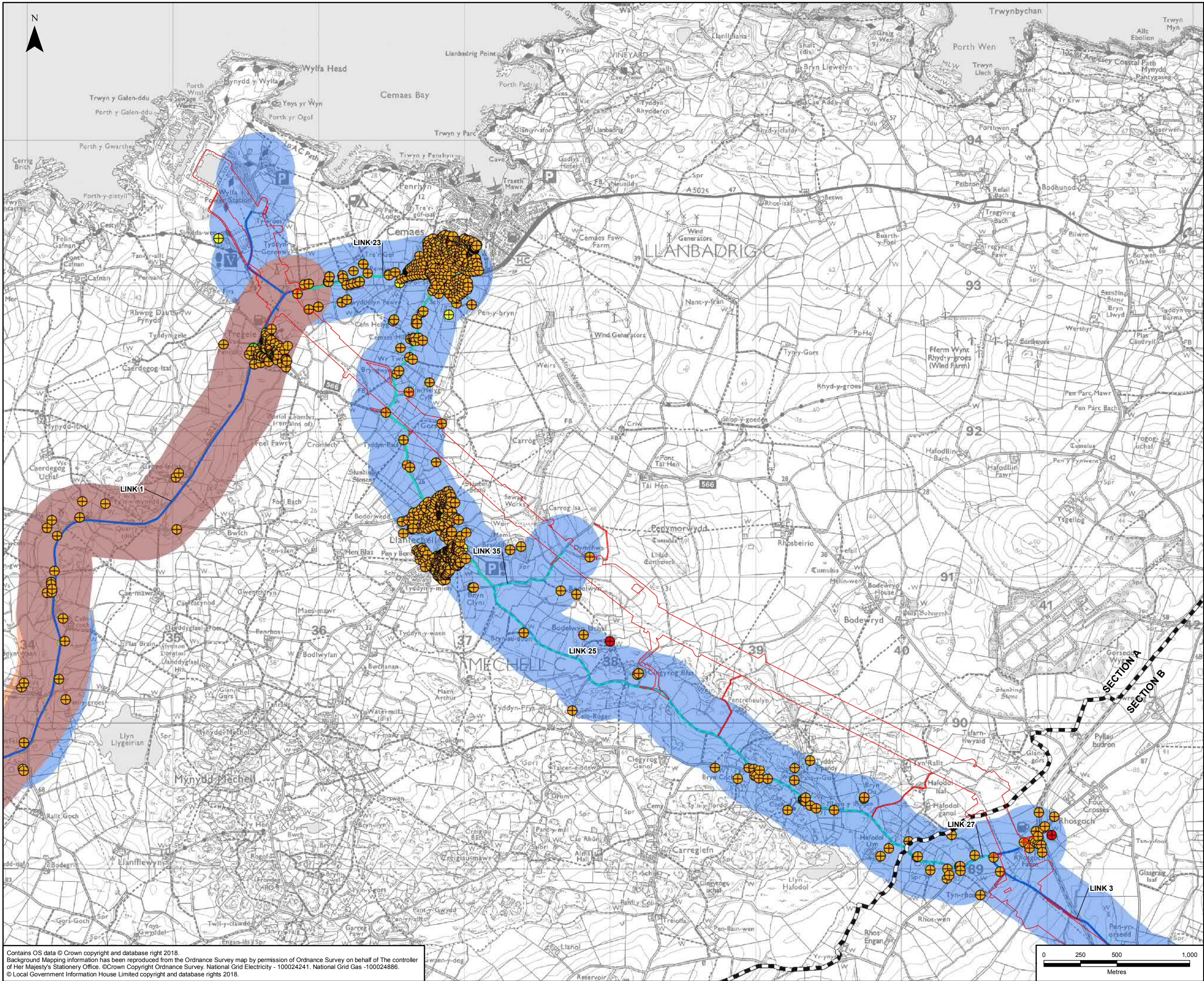
DOCUMENT 5.15.1.7

Study Area for Construction Traffic Routes Chapter 15 – Figure 7

National Grid (North Wales Connection Project)

*Regulation 5(2)(a) including (l) and (m) of the Infrastructure Planning
(Applications: Prescribed Forms and Procedure) Regulations 2009*





LEGEND

- ORDER LIMITS
- SECTION CUTLINES
- SENSITIVITY OF RECEPTOR:
 - HIGH
 - MEDIUM
 - LOW
 - VERY LOW
- PRIMARY LIGHT GOODS VEHICLE (LGV) / HEAVY GOODS VEHICLE (HGV)¹
- LGV / TRACTOR TRAILER ROUTE
- PRIMARY LGV ROUTE
- LGV / HGV ENABLING WORKS ROUTE
- LGV / HGV CONTINGENCY ROUTE
- TUNNEL HEAD HOUSE (THH) AND CABLE SEALING END COMPOUND (CSEC) EMERGENCY ACCESS
- THH / CSEC OPERATION AND MAINTENANCE ROUTE
- TRUNK ROAD NETWORK
- NOISE STUDY AREA: CONSTRUCTION TRAFFIC ROUTES (EXISTING A5025 ALIGNMENT)
- NOISE STUDY AREA: CONSTRUCTION TRAFFIC ROUTES (WYLFA NEWYDD POWER STATION A5025 RE-ALIGNMENT)

- NOTES**
- 1: LIGHT GOODS VEHICLE (LGV) 3.5T OR BELOW HEAVY GOODS VEHICLE (HGV) ABOVE 3.5T
 - 2: PRIMARY LGV / HGV ROUTE, LGV / HGV ENABLING WORKS ROUTE, THH / CSEC EMERGENCY ACCESS AND THH / CSEC OPERATION AND MAINTENANCE ROUTE
 - 3: LGV / HGV ENABLING WORKS ROUTE, THH / CSEC EMERGENCY ACCESS AND THH / CSEC OPERATION AND MAINTENANCE ROUTE
 - 4: LGV / HGV ENABLING WORKS ROUTE, LGV / HGV CONTINGENCY ROUTE
 - 5: PRIMARY LGV ROUTE, LGV / HGV ENABLING WORKS ROUTE, THH / CSEC EMERGENCY ACCESS AND THH / CSEC OPERATION AND MAINTENANCE ROUTE
 - 6: THH / CSEC EMERGENCY ACCESS AND THH / CSEC OPERATION AND MAINTENANCE ROUTE

A	31/07/2018	ENVIRONMENTAL STATEMENT	JF	SH	PE
Rev	Date	Description	GIS	Chk	App

nationalgrid

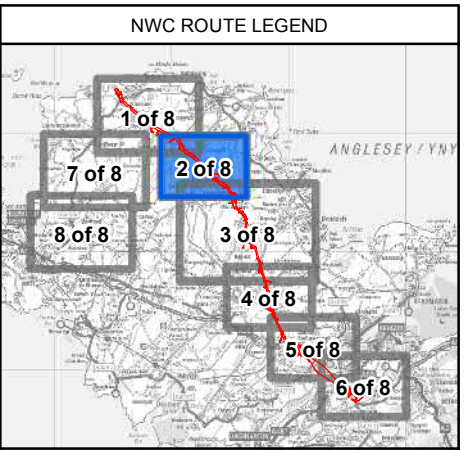
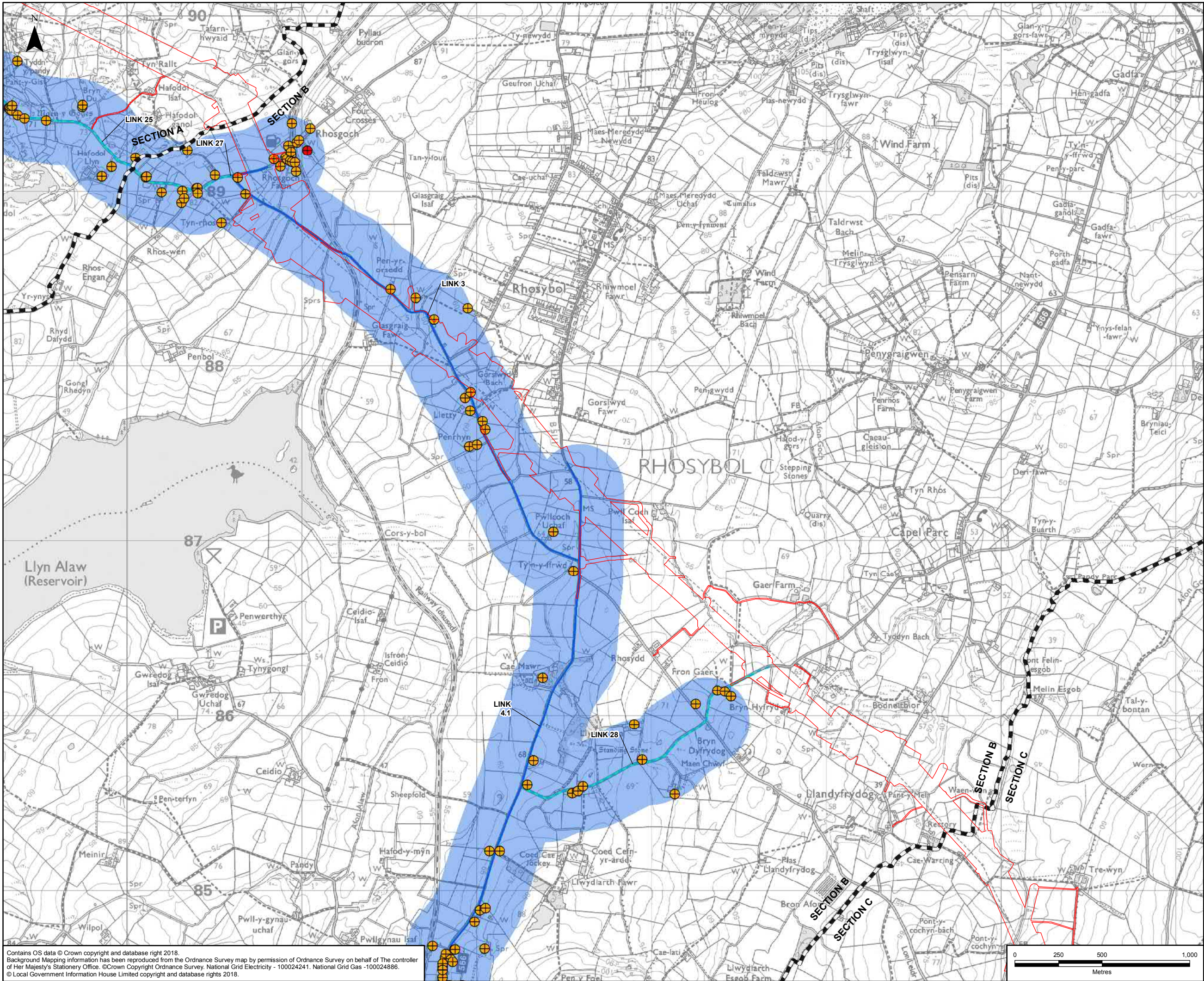
Scheme: NORTH WALES CONNECTION PROJECT

Document Number: 5.15.1.7

Document Title: FIGURE 15.7 STUDY AREA FOR CONSTRUCTION TRAFFIC ROUTES SECTION A

Creator: JF	Date: 31/07/2018	Checker: SH	Date: 31/07/2018	Approver: PE	Date: 31/07/2018
Document Type: FIGURE	Scale: 1:24,000	Format: A3	Sheets: 1 of 8	Rev: A	

Contains OS data © Crown copyright and database right 2018.
Background Mapping Information has been reproduced from the Ordnance Survey map by permission of Ordnance Survey on behalf of The controller of Her Majesty's Stationery Office. © Crown Copyright Ordnance Survey. National Grid Electricity - 100024241. National Grid Gas - 100024886.
© Local Government Information House Limited copyright and database rights 2018.



LEGEND

- ORDER LIMITS
- SECTION CUTLINES
- SENSITIVITY OF RECEPTOR:
 - HIGH
 - MEDIUM
 - LOW
- PRIMARY LIGHT GOODS VEHICLE (LGV) / HEAVY GOODS VEHICLE (HGV)¹
- LGV / TRACTOR TRAILER ROUTE
- PRIMARY LGV ROUTE
- LGV / HGV ENABLING WORKS ROUTE
- LGV / HGV CONTINGENCY ROUTE
- TUNNEL HEAD HOUSE (THH) AND CABLE SEALING END COMPOUND (CSEC) EMERGENCY ACCESS
- THH / CSEC OPERATION AND MAINTENANCE ROUTE
- TRUNK ROAD NETWORK
- NOISE STUDY AREA: CONSTRUCTION TRAFFIC ROUTES (EXISTING A5025 ALIGNMENT)
- NOISE STUDY AREA: CONSTRUCTION TRAFFIC ROUTES (WYLFA NEWYDD POWER STATION A5025 RE-ALIGNMENT)

NOTES

- 1: LIGHT GOODS VEHICLE (LGV) 3.5T OR BELOW HEAVY GOODS VEHICLE (HGV) ABOVE 3.5T
- 2: PRIMARY LGV / HGV ROUTE, LGV / HGV ENABLING WORKS ROUTE, THH / CSEC EMERGENCY ACCESS AND THH / CSEC OPERATION AND MAINTENANCE ROUTE
- 3: LGV / HGV ENABLING WORKS ROUTE, THH / CSEC EMERGENCY ACCESS AND THH / CSEC OPERATION AND MAINTENANCE ROUTE
- 4: LGV / HGV ENABLING WORKS ROUTE, LGV / HGV CONTINGENCY ROUTE
- 5: PRIMARY LGV ROUTE, LGV / HGV ENABLING WORKS ROUTE, THH / CSEC EMERGENCY ACCESS AND THH / CSEC OPERATION AND MAINTENANCE ROUTE
- 6: THH / CSEC EMERGENCY ACCESS AND THH / CSEC OPERATION AND MAINTENANCE ROUTE

A	31/07/2018	ENVIRONMENTAL STATEMENT	JF	SH	PE
Rev	Date	Description	GIS	Chk	App

nationalgrid

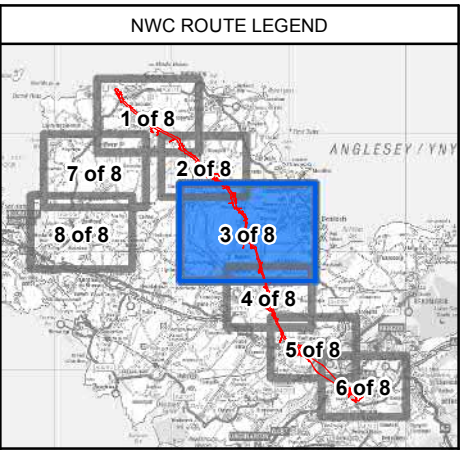
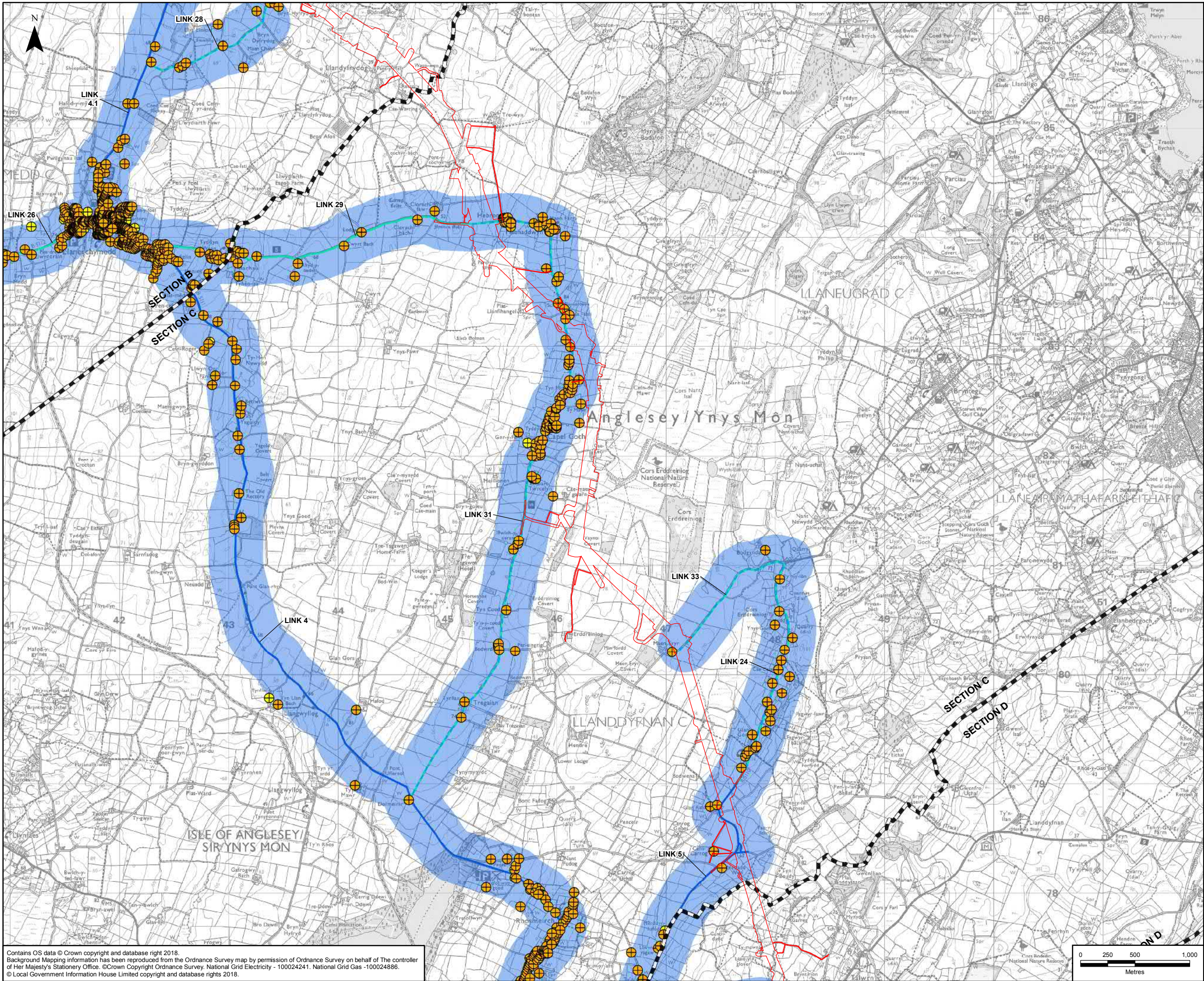
Scheme: NORTH WALES CONNECTION PROJECT

Document Number: 5.15.1.7

Document Title: FIGURE 15.7 STUDY AREA FOR CONSTRUCTION TRAFFIC ROUTES SECTION B

Creator: JF	Date: 31/07/2018	Checker: SH	Date: 31/07/2018	Approver: PE	Date: 31/07/2018
Document Type: FIGURE	Scale: 1:20,000	Format: A3	Sheets: 2 of 8	Rev: A	

Contains OS data © Crown copyright and database right 2018.
Background Mapping Information has been reproduced from the Ordnance Survey map by permission of Ordnance Survey on behalf of The controller of Her Majesty's Stationery Office. © Crown Copyright Ordnance Survey, National Grid Electricity - 100024241, National Grid Gas - 100024886.
© Local Government Information House Limited copyright and database rights 2018.



LEGEND

- ORDER LIMITS - OPTION A
- SECTION CUTLINES
- SENSITIVITY OF RECEPTOR:
 - MEDIUM
 - LOW
 - VERY LOW
- PRIMARY LIGHT GOODS VEHICLE (LGV) / HEAVY GOODS VEHICLE (HGV)¹
- LGV / TRACTOR TRAILER ROUTE
- PRIMARY LGV ROUTE
- LGV / HGV ENABLING WORKS ROUTE
- LGV / HGV CONTINGENCY ROUTE
- TUNNEL HEAD HOUSE (THH) AND CABLE SEALING END COMPOUND (CSEC) EMERGENCY ACCESS
- THH / CSEC OPERATION AND MAINTENANCE ROUTE
- TRUNK ROAD NETWORK
- NOISE STUDY AREA: CONSTRUCTION TRAFFIC ROUTES (EXISTING A5025 ALIGNMENT)
- NOISE STUDY AREA: CONSTRUCTION TRAFFIC ROUTES (WYLFA NEWYDD POWER STATION A5025 RE-ALIGNMENT)

NOTES

- 1: LIGHT GOODS VEHICLE (LGV) 3.5T OR BELOW HEAVY GOODS VEHICLE (HGV) ABOVE 3.5T
- 2: PRIMARY LGV / HGV ROUTE, LGV / HGV ENABLING WORKS ROUTE, THH / CSEC EMERGENCY ACCESS AND THH / CSEC OPERATION AND MAINTENANCE ROUTE
- 3: LGV / HGV ENABLING WORKS ROUTE, THH / CSEC EMERGENCY ACCESS AND THH / CSEC OPERATION AND MAINTENANCE ROUTE
- 4: LGV / HGV ENABLING WORKS ROUTE, LGV / HGV CONTINGENCY ROUTE
- 5: PRIMARY LGV ROUTE, LGV / HGV ENABLING WORKS ROUTE, THH / CSEC EMERGENCY ACCESS AND THH / CSEC OPERATION AND MAINTENANCE ROUTE
- 6: THH / CSEC EMERGENCY ACCESS AND THH / CSEC OPERATION AND MAINTENANCE ROUTE

A	31/07/2018	ENVIRONMENTAL STATEMENT	JF	SH	PE
Rev	Date	Description	GIS	Chk	App

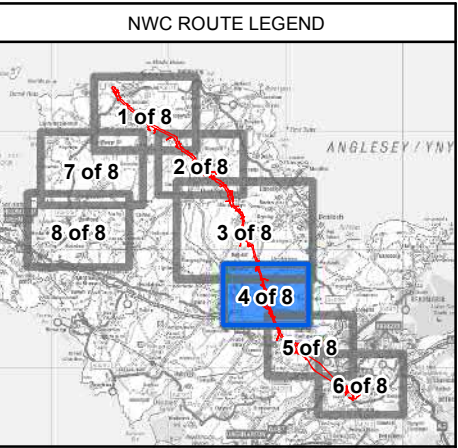
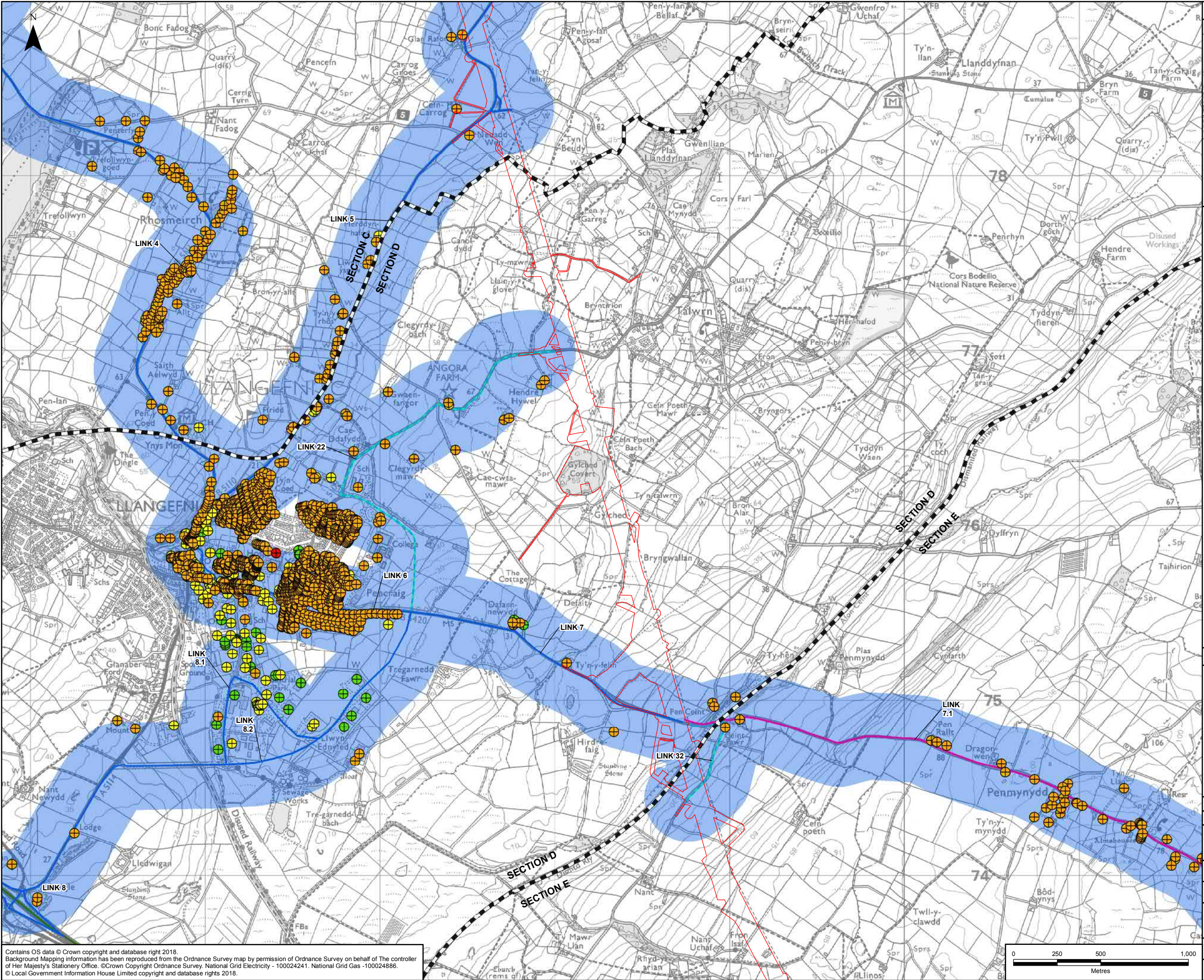
nationalgrid

Scheme: NORTH WALES CONNECTION PROJECT

Document Number: 5.15.1.7

Document Title: FIGURE 15.7
STUDY AREA FOR CONSTRUCTION TRAFFIC ROUTES
SECTION C OPTION A

Creator: JF	Date: 31/07/2018	Checker: SH	Date: 31/07/2018	Approver: PE	Date: 31/07/2018
Document Type: FIGURE	Scale: 1:32,000	Format: A3	Sheets: 3 of 8 Option A	Rev: A	



LEGEND

- ORDER LIMITS - OPTION A
- SECTION CUTLINES
- SENSITIVITY OF RECEPTOR:
 - HIGH
 - MEDIUM
 - LOW
 - VERY LOW
- PRIMARY LIGHT GOODS VEHICLE (LGV) / HEAVY GOODS VEHICLE (HGV)¹
- LGV / TRACTOR TRAILER ROUTE
- PRIMARY LGV ROUTE
- LGV / HGV ENABLING WORKS ROUTE
- LGV / HGV CONTINGENCY ROUTE
- TUNNEL HEAD HOUSE (THH) AND CABLE SEALING END COMPOUND (CSEC) EMERGENCY ACCESS
- THH / CSEC OPERATION AND MAINTENANCE ROUTE
- TRUNK ROAD NETWORK
- NOISE STUDY AREA: CONSTRUCTION TRAFFIC ROUTES (EXISTING A5025 ALIGNMENT)
- NOISE STUDY AREA: CONSTRUCTION TRAFFIC ROUTES (WYLF A NEWYDD POWER STATION A5025 RE-ALIGNMENT)

NOTES

- 1: LIGHT GOODS VEHICLE (LGV) 3.5T OR BELOW HEAVY GOODS VEHICLE (HGV) ABOVE 3.5T
- 2: PRIMARY LGV / HGV ROUTE, LGV / HGV ENABLING WORKS ROUTE, THH / CSEC EMERGENCY ACCESS AND THH / CSEC OPERATION AND MAINTENANCE ROUTE
- 3: LGV / HGV ENABLING WORKS ROUTE, THH / CSEC EMERGENCY ACCESS AND THH / CSEC OPERATION AND MAINTENANCE ROUTE
- 4: LGV / HGV ENABLING WORKS ROUTE, LGV / HGV CONTINGENCY ROUTE
- 5: PRIMARY LGV ROUTE, LGV / HGV ENABLING WORKS ROUTE, THH / CSEC EMERGENCY ACCESS AND THH / CSEC OPERATION AND MAINTENANCE ROUTE
- 6: THH / CSEC EMERGENCY ACCESS AND THH / CSEC OPERATION AND MAINTENANCE ROUTE

A	31/07/2018	ENVIRONMENTAL STATEMENT	JF	SH	PE
Rev	Date	Description	GIS	Chk	App

nationalgrid

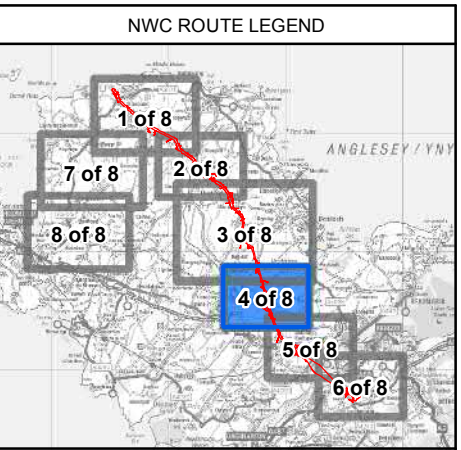
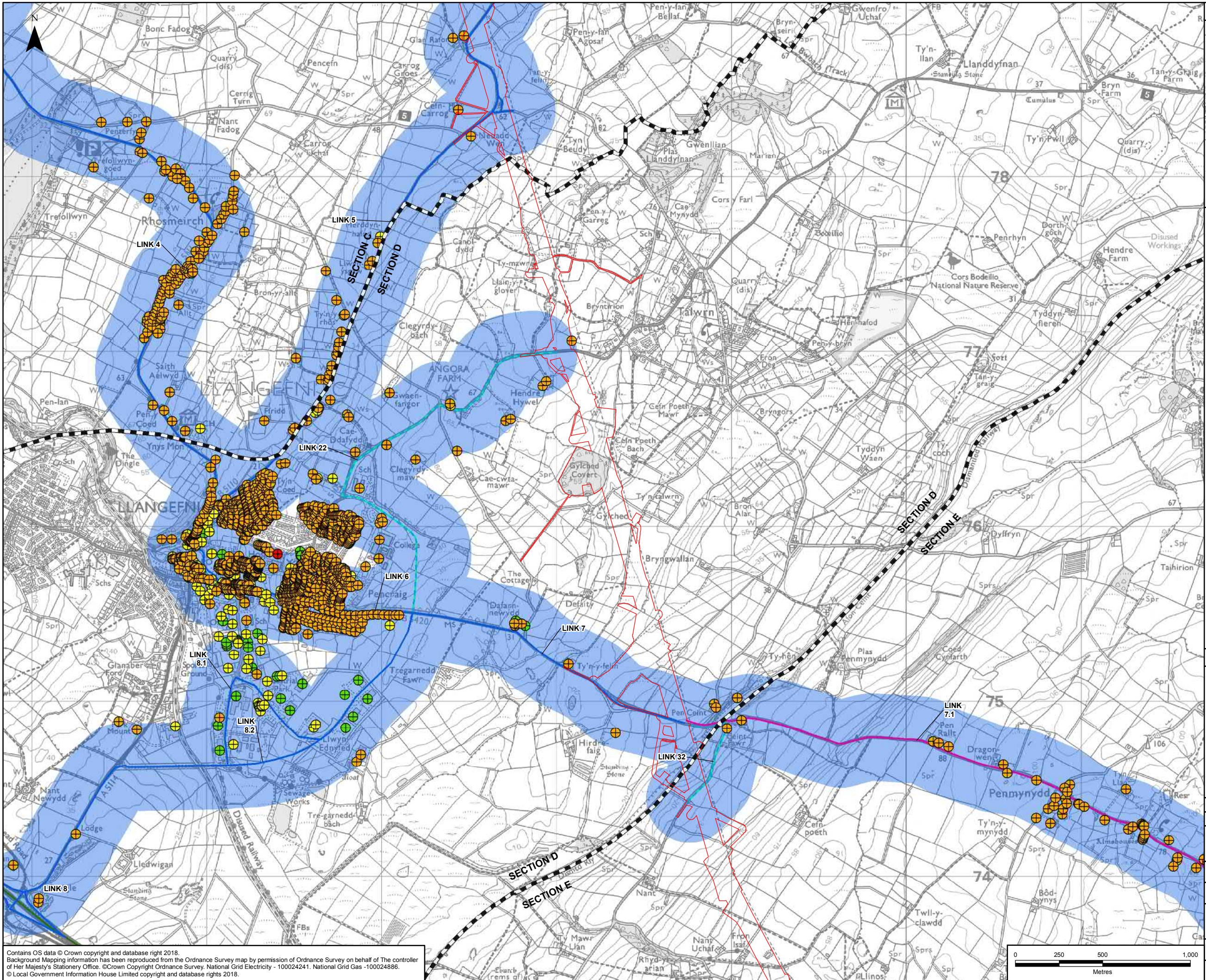
Scheme: NORTH WALES CONNECTION PROJECT

Document Number: 5.15.1.7

Document Title: FIGURE 15.7
STUDY AREA FOR CONSTRUCTION TRAFFIC ROUTES
SECTION D OPTION A

Creator: JF	Date: 31/07/2018	Checker: SH	Date: 31/07/2018	Approver: PE	Date: 31/07/2018
Document Type: FIGURE	Scale: 1:20,000	Format: A3	Sheets: 4 of 8 Option A	Rev: A	

Contains OS data © Crown copyright and database right 2018.
Background Mapping Information has been reproduced from the Ordnance Survey map by permission of Ordnance Survey on behalf of The controller of Her Majesty's Stationery Office. © Crown Copyright Ordnance Survey, National Grid Electricity - 100024241, National Grid Gas - 100024886.
© Local Government Information House Limited copyright and database rights 2018.



LEGEND

- ORDER LIMITS - OPTION B
- SECTION CUTLINES
- SENSITIVITY OF RECEPTOR:
 - HIGH
 - MEDIUM
 - LOW
 - VERY LOW
- PRIMARY LIGHT GOODS VEHICLE (LGV) / HEAVY GOODS VEHICLE (HGV)¹
- LGV / TRACTOR TRAILER ROUTE
- PRIMARY LGV ROUTE
- LGV / HGV ENABLING WORKS ROUTE
- LGV / HGV CONTINGENCY ROUTE
- TUNNEL HEAD HOUSE (THH) AND CABLE SEALING END COMPOUND (CSEC) EMERGENCY ACCESS
- THH / CSEC OPERATION AND MAINTENANCE ROUTE
- TRUNK ROAD NETWORK
- NOISE STUDY AREA: CONSTRUCTION TRAFFIC ROUTES (EXISTING A5025 ALIGNMENT)
- NOISE STUDY AREA: CONSTRUCTION TRAFFIC ROUTES (WYLF A NEWYDD POWER STATION A5025 RE-ALIGNMENT)

NOTES

1: LIGHT GOODS VEHICLE (LGV) 3.5T OR BELOW HEAVY GOODS VEHICLE (HGV) ABOVE 3.5T
2: PRIMARY LGV / HGV ROUTE, LGV / HGV ENABLING WORKS ROUTE, THH / CSEC EMERGENCY ACCESS AND THH / CSEC OPERATION AND MAINTENANCE ROUTE
3: LGV / HGV ENABLING WORKS ROUTE, THH / CSEC EMERGENCY ACCESS AND THH / CSEC OPERATION AND MAINTENANCE ROUTE
4: LGV / HGV ENABLING WORKS ROUTE, LGV / HGV CONTINGENCY ROUTE
5: PRIMARY LGV ROUTE, LGV / HGV ENABLING WORKS ROUTE, THH / CSEC EMERGENCY ACCESS AND THH / CSEC OPERATION AND MAINTENANCE ROUTE
6: THH / CSEC EMERGENCY ACCESS AND THH / CSEC OPERATION AND MAINTENANCE ROUTE

A	31/07/2018	ENVIRONMENTAL STATEMENT	JF	SH	PE
Rev	Date	Description	GIS	Chk	App

nationalgrid

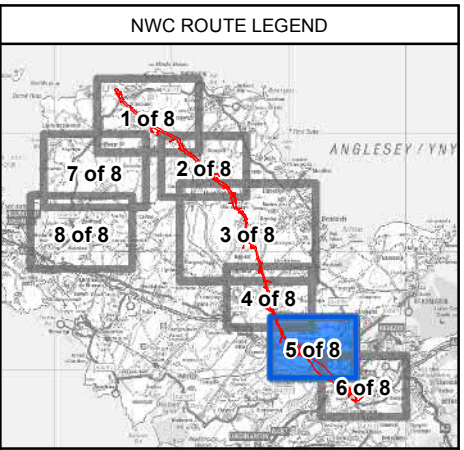
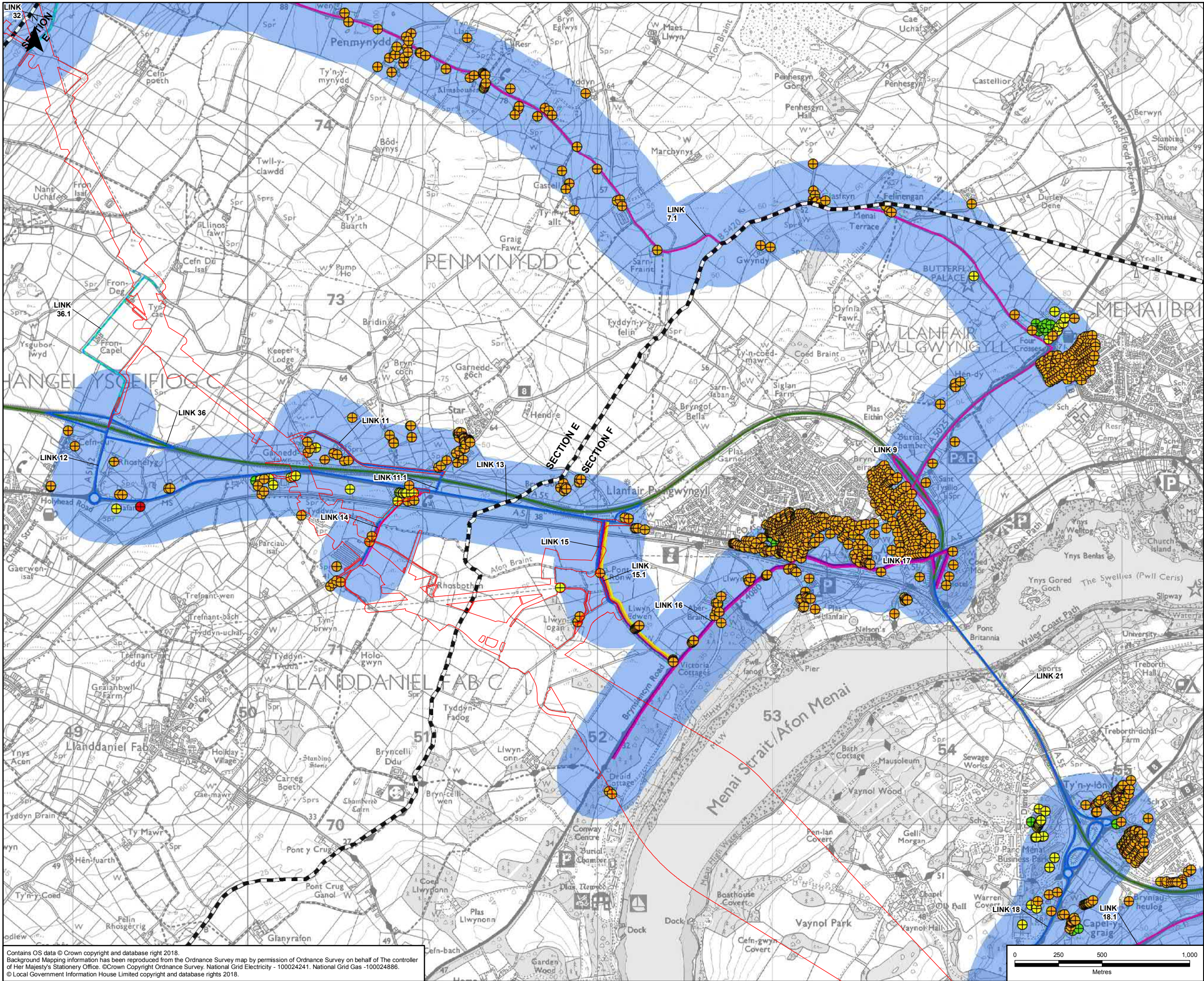
Scheme: NORTH WALES CONNECTION PROJECT

Document Number: 5.15.1.7

Document Title: FIGURE 15.7
STUDY AREA FOR CONSTRUCTION TRAFFIC ROUTES
SECTION D OPTION B

Creator: JF	Date: 31/07/2018	Checker: SH	Date: 31/07/2018	Approver: PE	Date: 31/07/2018
Document Type: FIGURE	Scale: 1:20,000	Format: A3	Sheets: 4 of 8 Option B	Rev: A	

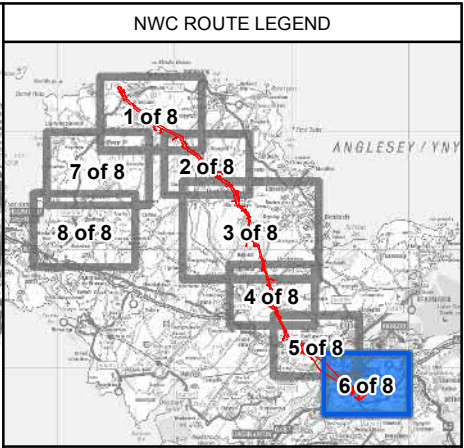
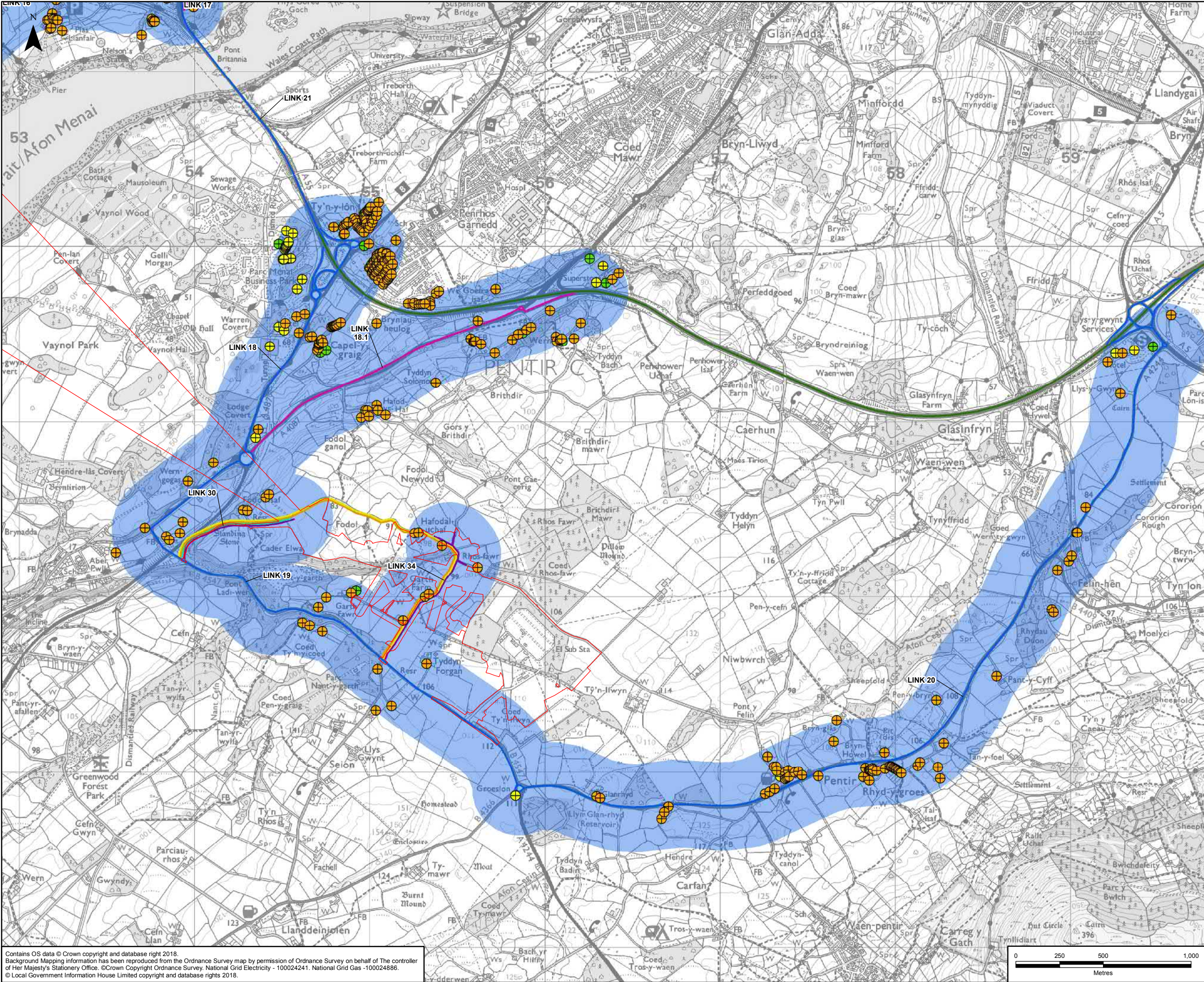
Contains OS data © Crown copyright and database right 2018.
Background Mapping Information has been reproduced from the Ordnance Survey map by permission of Ordnance Survey on behalf of The controller of Her Majesty's Stationery Office. © Crown Copyright Ordnance Survey, National Grid Electricity - 100024241, National Grid Gas - 100024886.
© Local Government Information House Limited copyright and database rights 2018.



LEGEND

- ORDER LIMITS
- SECTION CUTLINES
- SENSITIVITY OF RECEPTOR:
 - HIGH
 - MEDIUM
 - LOW
 - VERY LOW
- PRIMARY LIGHT GOODS VEHICLE (LGV) / HEAVY GOODS VEHICLE (HGV)¹
- LGV / TRACTOR TRAILER ROUTE
- PRIMARY LGV ROUTE
- LGV / HGV ENABLING WORKS ROUTE
- LGV / HGV CONTINGENCY ROUTE
- TUNNEL HEAD HOUSE (THH) AND CABLE SEALING END COMPOUND (CSEC) EMERGENCY ACCESS
- THH / CSEC OPERATION AND MAINTENANCE ROUTE
- TRUNK ROAD NETWORK
- NOISE STUDY AREA: CONSTRUCTION TRAFFIC ROUTES (EXISTING A5025 ALIGNMENT)
- NOISE STUDY AREA: CONSTRUCTION TRAFFIC ROUTES (WYLF A NEWYDD POWER STATION A5025 RE-ALIGNMENT)

NOTES					
1: LIGHT GOODS VEHICLE (LGV) 3.5T OR BELOW HEAVY GOODS VEHICLE (HGV) ABOVE 3.5T					
2: PRIMARY LGV / HGV ROUTE, LGV / HGV ENABLING WORKS ROUTE, THH / CSEC EMERGENCY ACCESS AND THH / CSEC OPERATION AND MAINTENANCE ROUTE					
3: LGV / HGV ENABLING WORKS ROUTE, THH / CSEC EMERGENCY ACCESS AND THH / CSEC OPERATION AND MAINTENANCE ROUTE					
4: LGV / HGV ENABLING WORKS ROUTE, LGV / HGV CONTINGENCY ROUTE					
5: PRIMARY LGV ROUTE, LGV / HGV ENABLING WORKS ROUTE, THH / CSEC EMERGENCY ACCESS AND THH / CSEC OPERATION AND MAINTENANCE ROUTE					
6: THH / CSEC EMERGENCY ACCESS AND THH / CSEC OPERATION AND MAINTENANCE ROUTE					
A	31/07/2018	ENVIRONMENTAL STATEMENT	JF	SH	PE
Rev	Date	Description	GIS	Chk	App
nationalgrid					
Scheme: NORTH WALES CONNECTION PROJECT					
Document Number: 5.15.1.7					
Document Title: FIGURE 15.7 STUDY AREA FOR CONSTRUCTION TRAFFIC ROUTES SECTION E					
Creator: JF	Date: 31/07/2018	Checker: SH	Date: 31/07/2018	Approver: PE	Date: 31/07/2018
Document Type: FIGURE	Scale: 1:20,000	Format: A3	Sheets: 5 of 8	Rev: A	



LEGEND

- ORDER LIMITS
- SECTION CUTLINES
- SENSITIVITY OF RECEPTOR:
 - MEDIUM
 - LOW
 - VERY LOW
- PRIMARY LIGHT GOODS VEHICLE (LGV) / HEAVY GOODS VEHICLE (HGV)¹
- LGV / TRACTOR TRAILER ROUTE
- PRIMARY LGV ROUTE
- LGV / HGV ENABLING WORKS ROUTE
- LGV / HGV CONTINGENCY ROUTE
- TUNNEL HEAD HOUSE (THH) AND CABLE SEALING END COMPOUND (CSEC) EMERGENCY ACCESS
- THH / CSEC OPERATION AND MAINTENANCE ROUTE
- TRUNK ROAD NETWORK
- NOISE STUDY AREA: CONSTRUCTION TRAFFIC ROUTES (EXISTING A5025 ALIGNMENT)
- NOISE STUDY AREA: CONSTRUCTION TRAFFIC ROUTES (WYLFA NEWYDD POWER STATION A5025 RE-ALIGNMENT)

NOTES

- 1: LIGHT GOODS VEHICLE (LGV) 3.5T OR BELOW HEAVY GOODS VEHICLE (HGV) ABOVE 3.5T
- 2: PRIMARY LGV / HGV ROUTE, LGV / HGV ENABLING WORKS ROUTE, THH / CSEC EMERGENCY ACCESS AND THH / CSEC OPERATION AND MAINTENANCE ROUTE
- 3: LGV / HGV ENABLING WORKS ROUTE, THH / CSEC EMERGENCY ACCESS AND THH / CSEC OPERATION AND MAINTENANCE ROUTE
- 4: LGV / HGV ENABLING WORKS ROUTE, LGV / HGV CONTINGENCY ROUTE
- 5: PRIMARY LGV ROUTE, LGV / HGV ENABLING WORKS ROUTE, THH / CSEC EMERGENCY ACCESS AND THH / CSEC OPERATION AND MAINTENANCE ROUTE
- 6: THH / CSEC EMERGENCY ACCESS AND THH / CSEC OPERATION AND MAINTENANCE ROUTE

A	31/07/2018	ENVIRONMENTAL STATEMENT	JF	SH	PE
Rev	Date	Description	GIS	Chk	App

nationalgrid

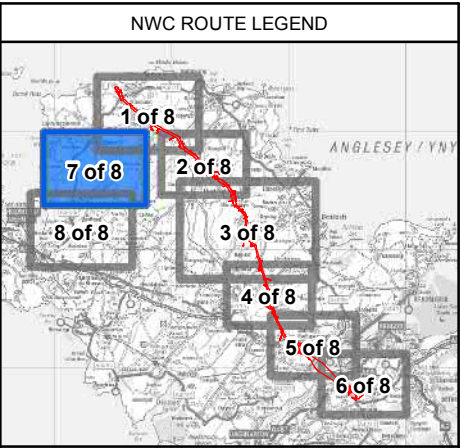
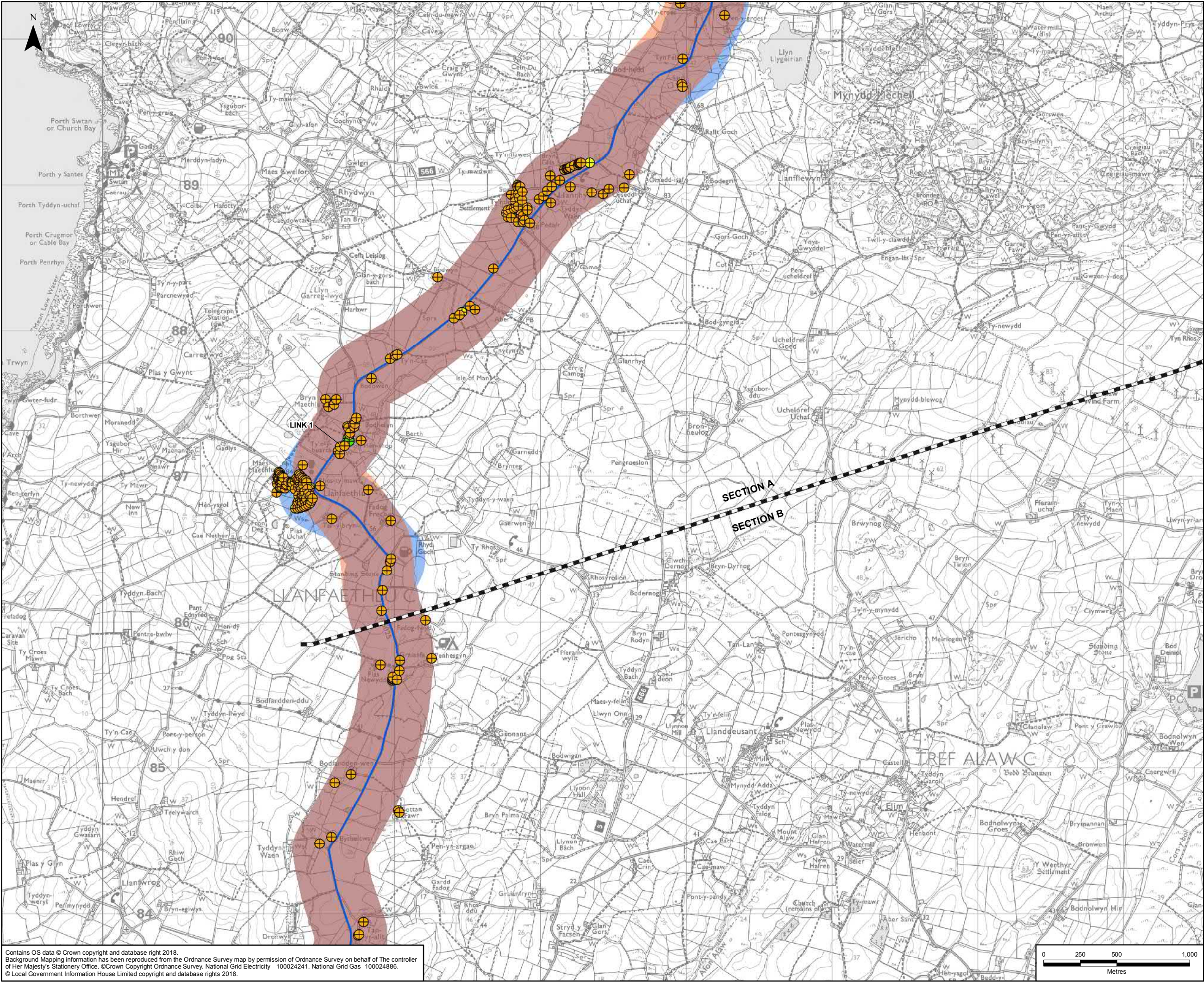
Scheme: NORTH WALES CONNECTION PROJECT

Document Number: 5.15.1.7

Document Title: FIGURE 15.7 STUDY AREA FOR CONSTRUCTION TRAFFIC ROUTES SECTION F

Creator: JF	Date: 31/07/2018	Checker: SH	Date: 31/07/2018	Approver: PE	Date: 31/07/2018
Document Type: FIGURE	Scale: 1:20,000	Format: A3	Sheets: 6 of 8	Rev: A	

Contains OS data © Crown copyright and database right 2018.
Background Mapping Information has been reproduced from the Ordnance Survey map by permission of Ordnance Survey on behalf of The controller of Her Majesty's Stationery Office. © Crown Copyright Ordnance Survey, National Grid Electricity - 100024241. National Grid Gas - 100024886.
© Local Government Information House Limited copyright and database rights 2018.



LEGEND

SECTION CUTLINES

SENSITIVITY OF RECEPTOR:

- MEDIUM
- LOW
- VERY LOW

PRIMARY LIGHT GOODS VEHICLE (LGV) / HEAVY GOODS VEHICLE (HGV)¹

LGV / TRACTOR TRAILER ROUTE

PRIMARY LGV ROUTE

LGV / HGV ENABLING WORKS ROUTE

LGV / HGV CONTINGENCY ROUTE

TUNNEL HEAD HOUSE (THH) AND CABLE SEALING END COMPOUND (CSEC) EMERGENCY ACCESS

THH / CSEC OPERATION AND MAINTENANCE ROUTE

TRUNK ROAD NETWORK

NOISE STUDY AREA: CONSTRUCTION TRAFFIC ROUTES (EXISTING A5025 ALIGNMENT)

NOISE STUDY AREA: CONSTRUCTION TRAFFIC ROUTES (WYLFA NEWYDD POWER STATION A5025 RE-ALIGNMENT)

NOTES

1: LIGHT GOODS VEHICLE (LGV) 3.5T OR BELOW HEAVY GOODS VEHICLE (HGV) ABOVE 3.5T

2: PRIMARY LGV / HGV ROUTE, LGV / HGV ENABLING WORKS ROUTE, THH / CSEC EMERGENCY ACCESS AND THH / CSEC OPERATION AND MAINTENANCE ROUTE

3: LGV / HGV ENABLING WORKS ROUTE, THH / CSEC EMERGENCY ACCESS AND THH / CSEC OPERATION AND MAINTENANCE ROUTE

4: LGV / HGV ENABLING WORKS ROUTE, LGV / HGV CONTINGENCY ROUTE

5: PRIMARY LGV ROUTE, LGV / HGV ENABLING WORKS ROUTE, THH / CSEC EMERGENCY ACCESS AND THH / CSEC OPERATION AND MAINTENANCE ROUTE

6: THH / CSEC EMERGENCY ACCESS AND THH / CSEC OPERATION AND MAINTENANCE ROUTE

A	31/07/2018	ENVIRONMENTAL STATEMENT	JF	SH	PE
Rev	Date	Description	GIS	Chk	App

nationalgrid

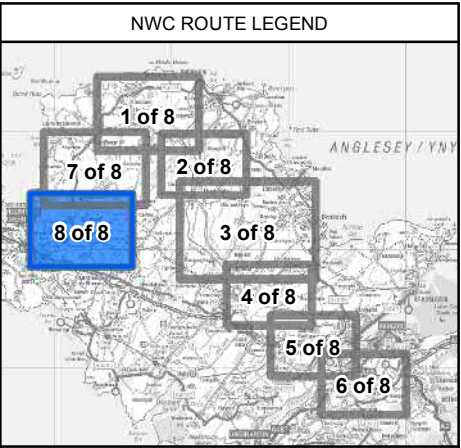
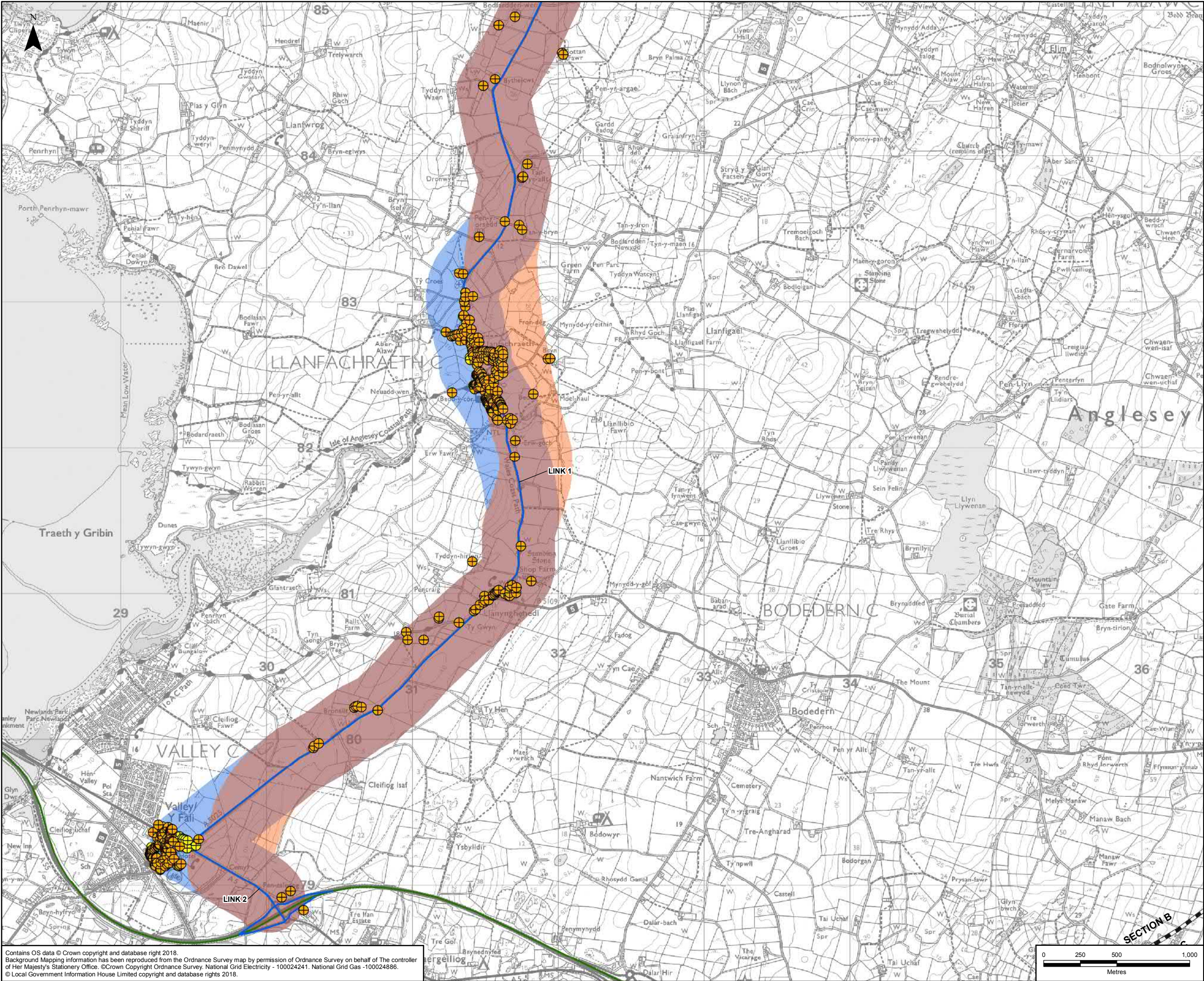
Scheme: NORTH WALES CONNECTION PROJECT

Document Number: 5.15.1.7

Document Title: FIGURE 15.7 STUDY AREA FOR CONSTRUCTION TRAFFIC ROUTES SECTION A&B

Creator: JF	Date: 31/07/2018	Checker: SH	Date: 31/07/2018	Approver: PE	Date: 31/07/2018
Document Type: FIGURE	Scale: 1:24,000	Format: A3	Sheets: 7 of 8	Rev: A	

Contains OS data © Crown copyright and database right 2018.
Background Mapping Information has been reproduced from the Ordnance Survey map by permission of Ordnance Survey on behalf of The controller of Her Majesty's Stationery Office. © Crown Copyright Ordnance Survey. National Grid Electricity - 100024241. National Grid Gas - 100024886.
© Local Government Information House Limited copyright and database rights 2018.



LEGEND

SECTION CUTLINES

SENSITIVITY OF RECEPTOR:

- MEDIUM
- LOW
- VERY LOW

PRIMARY LIGHT GOODS VEHICLE (LGV) / HEAVY GOODS VEHICLE (HGV)¹

LGV / TRACTOR TRAILER ROUTE

PRIMARY LGV ROUTE

LGV / HGV ENABLING WORKS ROUTE

LGV / HGV CONTINGENCY ROUTE

TUNNEL HEAD HOUSE (THH) AND CABLE SEALING END COMPOUND (CSEC) EMERGENCY ACCESS

THH / CSEC OPERATION AND MAINTENANCE ROUTE

TRUNK ROAD NETWORK

NOISE STUDY AREA: CONSTRUCTION TRAFFIC ROUTES (EXISTING A5025 ALIGNMENT)

NOISE STUDY AREA: CONSTRUCTION TRAFFIC ROUTES (WYLFA NEWYDD POWER STATION A5025 RE-ALIGNMENT)

NOTES

1: LIGHT GOODS VEHICLE (LGV) 3.5T OR BELOW HEAVY GOODS VEHICLE (HGV) ABOVE 3.5T
2: PRIMARY LGV / HGV ROUTE, LGV / HGV ENABLING WORKS ROUTE, THH / CSEC EMERGENCY ACCESS AND THH / CSEC OPERATION AND MAINTENANCE ROUTE
3: LGV / HGV ENABLING WORKS ROUTE, THH / CSEC EMERGENCY ACCESS AND THH / CSEC OPERATION AND MAINTENANCE ROUTE
4: LGV / HGV ENABLING WORKS ROUTE, LGV / HGV CONTINGENCY ROUTE
5: PRIMARY LGV ROUTE, LGV / HGV ENABLING WORKS ROUTE, THH / CSEC EMERGENCY ACCESS AND THH / CSEC OPERATION AND MAINTENANCE ROUTE
6: THH / CSEC EMERGENCY ACCESS AND THH / CSEC OPERATION AND MAINTENANCE ROUTE

A	31/07/2018	ENVIRONMENTAL STATEMENT	JF	SH	PE
Rev	Date	Description	GIS	Chk	App

nationalgrid

Scheme: NORTH WALES CONNECTION PROJECT

Document Number: 5.15.1.7

Document Title: FIGURE 15.7 STUDY AREA FOR CONSTRUCTION TRAFFIC ROUTES SECTION B

Creator: JF	Date: 31/07/2018	Checker: SH	Date: 31/07/2018	Approver: PE	Date: 31/07/2018
Document Type: FIGURE	Scale: 1:24,000	Format: A3	Sheets: 8 of 8	Rev: A	

Contains OS data © Crown copyright and database right 2018.
Background Mapping Information has been reproduced from the Ordnance Survey map by permission of Ordnance Survey on behalf of The controller of Her Majesty's Stationery Office. © Crown Copyright Ordnance Survey, National Grid Electricity - 100024241, National Grid Gas - 100024886.
© Local Government Information House Limited copyright and database rights 2018.